

Town Board Public Hearing for the Town of Yorkshire, was held on November 30, 2020 at the Town Hall, 82 S. Main Street, Delevan NY

Supervisor Spencer called the meeting to order at 7:00pm, followed by the pledge to the flag.

Roll Call

Marcia Spencer, Supervisor, Present  
Christopher Edmunds, Deputy Supv. & Council, Absent  
Kenneth Fisher, Council Member, Absent  
Teresa Hewitt, Council Member, Present  
Bradley Regan, Council Member, Present

Other Town Officials Present Donna Lavery, Town Clerk, Christopher Lexer, Highway Supervisor & Code Enforcement, Peter Sorgi, Attorney

Supv Spencer Opened the Public Hearing for the Sewer District Bonded Increase

No members of the public are in attendance for or against

Mr. Peter Sorgi and the Yorkshire Town Board discussed the resolution required to increase the maximum amount to be bonded. A resolution needed for 3.855 million for the improvements to the Yorkshire Corners Sewer District.

The Town of Yorkshire has already received a WIIA grant.

Resolution #93-20

On a motion of Coun Regan, seconded by Coun Hewitt the following resolution was resolved, that this project will result in no significant adverse impacts in the environment, and therefore an environmental impact statement need not be prepared. This negative declaration impact is issued.

Roll Call was taken by Clerk Lavery

Supv. Spencer – Aye  
Coun Fisher – Absent  
Coun Edmunds – Absent  
Coun Regan – Aye  
Coun Hewitt – Aye  
3 – Aye; 0 – Nays; 2 – Absent – Adopted

Resolution #94-20

Resolution to Increase the Maximum Amount to Be Bonded for  
District Improvements for Yorkshire Corners Sewer District

Whereas, the Town Board of the Town of Yorkshire, New York (the "Town") duly adopted a resolution directing MDA Consulting Engineers, PLLC, the Engineer for the Town, to supervise the preparation of a map, plan and report for providing the facilities, improvements or services in a portion of the Town, wherein a sewer district was established, as hereinafter described, and

Whereas, after the said Town Engineer duly filed said map, plan and report in the office of the Town Clerk of the Town of Yorkshire, the said Town Board did on May 20, 2019, duly adopt an order reciting a description of the boundaries of the proposed district, the maximum amount proposed to be expended for the improvement, the proposed method of financing to be employed, the fact that a plan, map and report describing the same are on file in the Town Clerk's office for public inspection and specifying that said Town Board shall meet at the Yorkshire Town Hall, located at 82 South Main Street, Delevan, New York, on the June 10, 2019 at 7:00 PM for the purpose of conducting a public hearing on such proposaII to establish the sewer district with the specified improvements and to hear all persons interested in the subject thereof concerning the same, and

Whereas, copies of said order were duly published and posted according to law, and said Town Board did, at the time and place specified in said order, duly meet and consider such proposal and heard all persons interested in the subject thereof, who appeared at such time and place, concerning the same, and

Whereas, the Yorkshire Town Board voted to establish the Yorkshire Corners sewer District on July 18, 2019; and

Whereas, the Town Board has called a Public Hearing to be held on November 30, 202:0 to increase the amount to be bonded to complete the project completed by the Map, Plan and Report to an amount not to exceed \$3.855 Million, as explained in the letter from **MDA** Consulting Engineers, PLLC, the Engineer for the Town, to Marcia Spencer, Town Supervisor, attached hereto as Exhibit 1 and expressly made a part hereof. The increase is necessary in light of the amount of grants received thus far and the uncertainty as to whether any further grants will be awarded.

Whereas, the evidence offered at such time and place requires that the Town Board make the determination hereinafter made;

Now, Therefore, Be It Resolved, by the Town Board, in the County of Cattaraugus, that it be and hereby is determined as follows:

- (1) The notice of hearing was published and posted as required by law and is otherwise sufficient.

- (2) That all of the property and property owners,, within the proposed Sewer District are benefited thereby, even with the amount to be potential'ly bonded increased.
- (3) That all of the property and property owners benefited a1-e included within the proposed Sewer District, even with the amount to be potentially bonded increased.
- (4) It is in the public interest to establish the proposed Sewer District as hereinafter described, even with the amount to be potentially bonded increased.

And be it, Further Resolved, that the Town Board does hereby approve the increase to \$3.55 Million as the maximum amount to be bonded in the Sewer District *as* hereinafter described known as Yorkshire Corners Sewer District, described as follows:

ALL THAT TRACT OR PARCEL OF LAND, situate in the Town of Yorkshire, County of Cattaraugus and State of New York, being part of Lot Numbers 1 and 8, Township 7, Range 5 and Lot Number 16, Township 6, Range 5 of the Holland Land Company's Survey, as shown on the map attached hereto as entitled Yorkshire Corners Sewer District Boundary Map prepared by IMDA Consulting Engineers, PLLC dated March 29, 2019 and further described as the following parcels pursuant to the records of Cattaraugus County as of January 9, 2019:

SBL	Address	Town	County
5.009-4-6	3119 NYS Rte 39	Yorkshire	Cattaraugus
5.009-2-19	3124 NYS Rte 39	Yorkshire	Cattaraugus
5.009-2-7	3024 <b>NYS</b> Rte 39	Yorkshire	Cattaraugus
5.009-2-6.1	3016 NYS Rte 39	Yorkshire	Cattaraugus
5.009-3-13.2	3011 NYS Rte 39	Yorkshire	Cattaraugus
5.009-3-4.2	VL NYS Rte 39	Yorkshire	Cattaraugus
5.009-2-10	3050 NYS Rte 39	Yorkshire	Cattaraugus
5.009-2-20	3128 NYS Rte 39	Yorkshire	Cattaraugus
5.009-3-7	3055 NYS Rte 39	Yorkshire	Cattaraugus
5.009-3-11	3021 NYS Rte 39	Yorkshire	Cattaraugus
5.009-3-4.1	3073 NYS Rte 39	Yorkshire	Cattaraugus
5.009-3-12	3017 NYS Rte 39	Yorkshire	Cattaraugus
5.009-3-9	3043 NYS Rte 39	Yorkshire	Cattaraugus
5.009-2-21	3134 NYS Rte 39	Yorkshire	Cattaraugus
5.009-2-22	3140 NYS Rte 39	Yorkshire	Cattaraugus
5.009-5-6.2	VL <b>NYS</b> Rte 39	Yorkshire	Cattaraugus
5.009-5-4	3223 NYS Rte 39	Yorkshire	Cattaraugus
5.009-5-5	3219 NYS Rte 39	Yorkshire	Cattaraugus
5.009-2-8	3034 NYS Rte 39	Yorkshire	Cattaraugus
5.009-2-15.2	3114 NYS Rte 39	Yorkshire	Cattaraugus
5.009-2-9	3044 NYS Rte 39	Yorkshire	Cattaraugus
5.009-4-4	3129 NYS Rte 39	Yorkshire	Cattaraugus
5.009-2-18	3120 NYS Rte 39	Yorkshire	Cattaraugus
5.009-2-11	3056 NYS Rte 39	Yorkshire	Cattaraugus

5.009-1-19	3226 NYS Rte 39	Yorkshire	Cattaraugus
5.009-4-5	3125 NYS Rte 39	Yorkshire	Cattaraugus
5.009-5-7	NYS Rte 39 (cemetery)	Yorkshire	Cattaraugus
5.009-4-19	12172 Old Olean Rd	Yorkshire	Cattaraugus
5.009-4-11.2	VL Old Olean Rd	Yorkshire	Cattaraugus
5.009-4-26	12206 Old Olean Rd	Yorkshire	Cattaraugus
5.009-4-16	12154 Old Olean Rd	Yorkshire	Cattaraugus
5.001-1-10	12141 Old Olean Rd	Yorkshire	Cattaraugus
5.009-4-20	12178 Old Olean Rd	Yorkshire	Cattaraugus
5.009-4-24	12196 Old Olean Rd	Yorkshire	Cattaraugus
5.009-5-11	12207 Old Olean Rd	Yorkshire	Cattaraugus
5.009-4-18	12162 Old Olean Rd	Yorkshire	Cattaraugus
5.001-1-21.5	12103 Old Olean Rd	Yorkshire	Cattaraugus
5.009-4-17	12156 Old Olean Rd	Yorkshire	Cattaraugus
5.001-1-12.1	12127 Old Olean Rd	Yorkshire	Cattaraugus
5.001-1-7	12169 Old Olean Rd	Yorkshire	Cattaraugus
5.009-4-21	12182 Old Olean Rd	Yorkshire	Cattaraugus
5.001-1-11	12137 Old Olean Rd	Yorkshire	Cattaraugus
5.009-4-23	12190 Old Olean Rd	Yorkshire	Cattaraugus
5.001-1-14	12117 Old Olean Rd	Yorkshire	Cattaraugus
5.001-1-13	12123 Old Olean Rd	Yorkshire	Cattaraugus
5.001-1-9.2	12153 Old Olean Rd	Yorkshire	Cattaraugus
5.009-4-22	12188 Old Olean Rd	Yorkshire	Cattaraugus
5.001-1-8	12163 Old Olean Rd	Yorkshire	Cattaraugus
5.009-4-25	12198 Old Olean Rd	Yorkshire	Cattaraugus
5.001-1-6.1	12177 Old Olean Rd	Yorkshire	Cattaraugus
5.009-4-2.1	12212 Old Olean Rd	Yorkshire	Cattaraugus
5.001-1-9.1	Old Olean Rd (field crops)	Yorkshire	Cattaraugus
5.009-5-16	12193 Old Olean Rd	Yorkshire	Cattaraugus
5.001-1-21.3	12097 Old Olean Rd	Yorkshire	Cattaraugus
5.001-1-5	12189 Old Olean Rd	Yorkshire	Cattaraugus
5.009-5-38	12187 Pine St	Yorkshire	Cattaraugus
5.009-6-15	12134 Pine St	Yorkshire	Cattaraugus
5.009-5-29	12160 Pine St	Yorkshire	Cattaraugus
5.009-5-39	12177 Pine St	Yorkshire	Cattaraugus
5.009-6-5	12119 Pine St	Yorkshire	Cattaraugus
5.009-5-31	12172 Pine St	Yorkshire	Cattaraugus
5.009-6-4	12125 Pine St	Yorkshire	Cattaraugus
5.009-6-7	12115 Pine St	Yorkshire	Cattaraugus
5.009-5-41	12159 Pine St	Yorkshire	Cattaraugus
5.009-6-14	12140 Pine St	Yorkshire	Cattaraugus
5.009-6-3	12131 Pine St	Yorkshire	Cattaraugus
5.009-5-40	12173 Pine St	Yorkshire	Cattaraugus

5.009-5-30	VL Pine St	Yorkshire	Cattaraugus
5.009-6-16	12124 Pine St	Yorkshire	Cattaraugus
5.009-6-6	12117 Pine St	Yorkshire	Cattaraugus
5.009-6-10	12102 Pine St	Yorkshire	Cattaraugus
5.009-6-8	VL Pine St	Yorkshire	Cattaraugus
5.009-6-9	VL Pine St	Yorkshire	Cattaraugus
5.009-5-42.1	12151 Pine St	Yorkshire	Cattaraugus
5.009-5-32	12178 Pine St	Yorkshire	Cattaraugus
5.009-6-2	12139 Pine St	Yorkshire	Cattaraugus
5.009-6-11	12128 Pine St	Yorkshire	Cattaraugus
4.002-1-25./1	1 Pioneer Cir	Yorkshire	Cattaraugus
4.002-1-25./100	100 Pioneer Ln	Yorkshire	Cattaraugus
4.002-1-25./101	101 Pioneer Ln	Yorkshire	Cattaraugus
4.002-1-25./102	102 Pioneer Ln	Yorkshire	Cattaraugus
4.002-1-25./103	103 Pioneer Ln	Yorkshire	Cattaraugus
4.002-1-25./104	104 Pioneer Ln	Yorkshire	Cattaraugus
4.002-1-25./105	105 Pioneer Ln	Yorkshire	Cattaraugus
4.002-1-25./107	107 Pioneer Ln	Yorkshire	Cattaraugus
4.002-1-25./108	108 Pioneer Ln	Yorkshire	Cattaraugus
4.002-1-25./109	109 Pioneer Ln	Yorkshire	Cattaraugus
4.002-1-25./11	11 Pioneer Cir	Yorkshire	Cattaraugus
4.002-1-25./128	128 Pioneer Ln	Yorkshire	Cattaraugus
4.002-1-25./129	129 Pioneer Ln	Yorkshire	Cattaraugus
4.002-1-25./130	130 Pioneer Ln	Yorkshire	Cattaraugus
4.002-1-25./16	16 Pioneer Ln	Yorkshire	Cattaraugus
4.002-1-25./17	17 Pioneer Ln	Yorkshire	Cattaraugus
4.002-1-25./2	2 Pioneer Ln	Yorkshire	Cattaraugus
4.002-1-25./20	20 Pioneer Ln	Yorkshire	Cattaraugus
4.002-1-25./22	22 Pioneer Ln	Yorkshire	Cattaraugus
4.002-1-25./221	22B Pioneer Ln	Yorkshire	Cattaraugus
4.002-1-25./23	23 Pioneer Ln	Yorkshire	Cattaraugus
4.002-1-25./24	24 Pioneer Ln	Yorkshire	Cattaraugus
4.002-1-25./25	25 Pioneer Ln	Yorkshire	Cattaraugus
4.002-1-25./254	254 Pioneer Ln	Yorkshire	Cattaraugus
4.002-1-25./255	255 Pioneer Ln	Yorkshire	Cattaraugus
4.002-1-25./256	256 Pioneer Ln	Yorkshire	Cattaraugus
4.002-1-25./257	257 Pioneer Ln	Yorkshire	Cattaraugus
4.002-1-25./26	26 Pioneer Ln	Yorkshire	Cattaraugus
4.002-1-25./27	27 Pioneer Ln	Yorkshire	Cattaraugus
4.002-1-25./28	28 Pioneer Ln	Yorkshire	Cattaraugus
4.002-1-25./291	29 Pioneer Ln	Yorkshire	Cattaraugus
4.002-1-25./3	3 Pioneer Cir	Yorkshire	Cattaraugus
4.002-1-25./31	31 Pioneer Ln	Yorkshire	Cattaraugus

4.002-1-25./321	32 Pioneer Ln	Yorkshire	Cattaraugus
4.002-1-25./33	33 Pioneer Ln	Yorkshire	Cattaraugus
4.002-1-25./36	36 Pioneer Ln	Yorkshire	Cattaraugus
4.002-1-25./38	38 Pioneer Ln	Yorkshire	Cattaraugus
4.002-1-25./4	4 Pioneer Ln	Yorkshire	Cattaraugus
4.002-1-25./41	41 Pioneer Ln	Yorkshire	Cattaraugus
4.002-1-25./42	42 Pioneer Ln	Yorkshire	Cattaraugus
4.002-1-25./5	5 Pioneer Cir	Yorkshire	Cattaraugus
4.002-1-25./54	54 Pioneer Ln	Yorkshire	Cattaraugus
4.002-1-25./58	58 Pioneer Ln	Yorkshire	Cattaraugus
4.002-1-25./59	59 Pioneer Ln	Yorkshire	Cattaraugus
4.002-1-25./6	6 Pioneer Ln	Yorkshire	Cattaraugus
4.002-1-25./60	60 Pioneer Ln	Yorkshire	Cattaraugus
4.002-1-25./61	61 Pioneer Ln	Yorkshire	Cattaraugus
4.002-1-25./62	62 Pioneer Ln	Yorkshire	Cattaraugus
4.002-1-25./63	63 Pioneer Ln	Yorkshire	Cattaraugus
4.002-1-25./64	64 Pioneer Ln	Yorkshire	Cattaraugus
4.002-1-25./65	65 Pioneer Ln	Yorkshire	Cattaraugus
4.002-1-25./7	7 Pioneer Ln	Yorkshire	Cattaraugus
4.002-1-25./72	72 Pioneer Ln	Yorkshire	Cattaraugus
4.002-1-25./73	73 Pioneer Ln	Yorkshire	Cattaraugus
4.002-1-25./8	8 Pioneer Ln	Yorkshire	Cattaraugus
4.002-1-25./83	83 Pioneer Ln	Yorkshire	Cattaraugus
4.002-1-25./84	84 Pioneer Ln	Yorkshire	Cattaraugus
4.002-1-25./85	85 Pioneer Ln	Yorkshire	Cattaraugus
4.002-1-25./86	86 Pioneer Ln	Yorkshire	Cattaraugus
4.002-1-25./87	87 Pioneer Ln	Yorkshire	Cattaraugus
4.002-1-25./88	88 Pioneer Ln	Yorkshire	Cattaraugus
4.002-1-25./89	89 Pioneer Ln	Yorkshire	Cattaraugus
4.002-1-25./9	9 Pioneer Ln	Yorkshire	Cattaraugus
4.002-1-25./90	90 Pioneer Ln	Yorkshire	Cattaraugus
4.002-1-25./92	92 Pioneer Ln	Yorkshire	Cattaraugus
4.002-1-25./93	93 Pioneer Ln	Yorkshire	Cattaraugus
4.002-1-25./94	94 Pioneer Ln	Yorkshire	Cattaraugus
4.002-1-25./95	95 Pioneer Ln	Yorkshire	Cattaraugus
4.002-1-25./97	97 Pioneer Ln	Yorkshire	Cattaraugus
4.002-1-25./98	98 Pioneer Ln	Yorkshire	Cattaraugus
4.002-1-25./99	99 Pioneer Ln	Yorkshire	Cattaraugus
5.009-6-13	3201 Poplar St	Yorkshire	Cattaraugus
5.009-6-12	3193 Poplar St	Yorkshire	Cattaraugus
4.004-4-2.1/12	12 Shari Ln	Yorkshire	Cattaraugus
4.004-4-2.1/14	14 Shari Ln	Yorkshire	Cattaraugus
4.004-4-2.1/15	15 Shari Ln	Yorkshire	Cattaraugus

4.004-4-2.1/16	16 Shari Ln	Yorkshire	Cattaraugus
4.004-4-2.1/19	18 Shari Ln	Yorkshire	Cattaraugus
4.004-4-2.1/26	26 Shari Ln	Yorkshire	Cattaraugus
4.004-4-2.1/271	27 Shari Ln	Yorkshire	Cattaraugus
4.004-4-2.1/28	28 Shari Ln	Yorkshire	Cattaraugus
4.004-4-2.1/29	29 Shari Ln	Yorkshire	Cattaraugus
4.004-4-2.1/3	3 Shari Ln	Yorkshire	Cattaraugus
4.004-4-2.1/4	4 Shari Ln	Yorkshire	Cattaraugus
4.004-4-2.1/94	93 Shari Ln	Yorkshire	Cattaraugus
4.004-4-2.1/95	95 Shari Ln	Yorkshire	Cattaraugus
4.004-4-2.1/96	96 Shari Ln	Yorkshire	Cattaraugus
4.004-4-2.1/98	98 Shari Ln	Yorkshire	Cattaraugus
4.002-1-25./32	32 Tracey Ln	Yorkshire	Cattaraugus
4.002-1-25./331	33 Tracey Ln	Yorkshire	Cattaraugus
4.002-1-25./341	34 Tracey Ln	Yorkshire	Cattaraugus
4.002-1-25./35	35 Tracey Ln	Yorkshire	Cattaraugus
4.002-1-25./361	36 Tracey Ln	Yorkshire	Cattaraugus
4.002-1-25./37	37 Tracey Ln	Yorkshire	Cattaraugus
4.002-1-25./381	38 Tracey Ln	Yorkshire	Cattaraugus
4.002-1-25./402	40 Tracey Ln	Yorkshire	Cattaraugus
4.002-1-25./39	39 Tracy Ln	Yorkshire	Cattaraugus
4.044-1-8	3296 W Yorkshire Rd	Yorkshire	Cattaraugus
4.002-1-7.1	3300-3314 W Yorkshire Rd	Yorkshire	Cattaraugus
4.044-1-18.3	VL W Yorkshire Rd	Yorkshire	Cattaraugus
4.044-1-10	3286 W Yorkshire Rd	Yorkshire	Cattaraugus
4.044-1-17	3266 W Yorkshire Rd	Yorkshire	Cattaraugus
4.044-1-9	3290 W Yorkshire Rd	Yorkshire	Cattaraugus
4.044-1-15.3	3274 W Yorkshire Rd	Yorkshire	Cattaraugus
4.002-1-21.1	W Yorkshire Rd (junkyard)	Yorkshire	Cattaraugus
4.002-1-21.2	VL W Yorkshire Rd	Yorkshire	Cattaraugus
4.004-4-2.1/58	58 West Ln	Yorkshire	Cattaraugus
4.004-4-2.1/59	59 West Ln	Yorkshire	Cattaraugus
4.004-4-2.1/60	60 West Ln	Yorkshire	Cattaraugus
4.004-4-2.1/62	62 West Ln	Yorkshire	Cattaraugus
5.009-5-34	3215 Westover Ave	Yorkshire	Cattaraugus
5.009-5-37	3225 Westover Ave	Yorkshire	Cattaraugus
5.009-5-22	3199 Westover Ave	Yorkshire	Cattaraugus
5.009-5-20	3185 Westover Ave	Yorkshire	Cattaraugus
5.009-5-48	3236 Westover Ave	Yorkshire	Cattaraugus
5.009-5-13	3164-68 Westover Ave	Yorkshire	Cattaraugus
5.009-5-46	3243 Westover Ave	Yorkshire	Cattaraugus
5.009-5-45	3239 Westover Ave	Yorkshire	Cattaraugus
5.009-5-12	3156 Westover Ave	Yorkshire	Cattaraugus

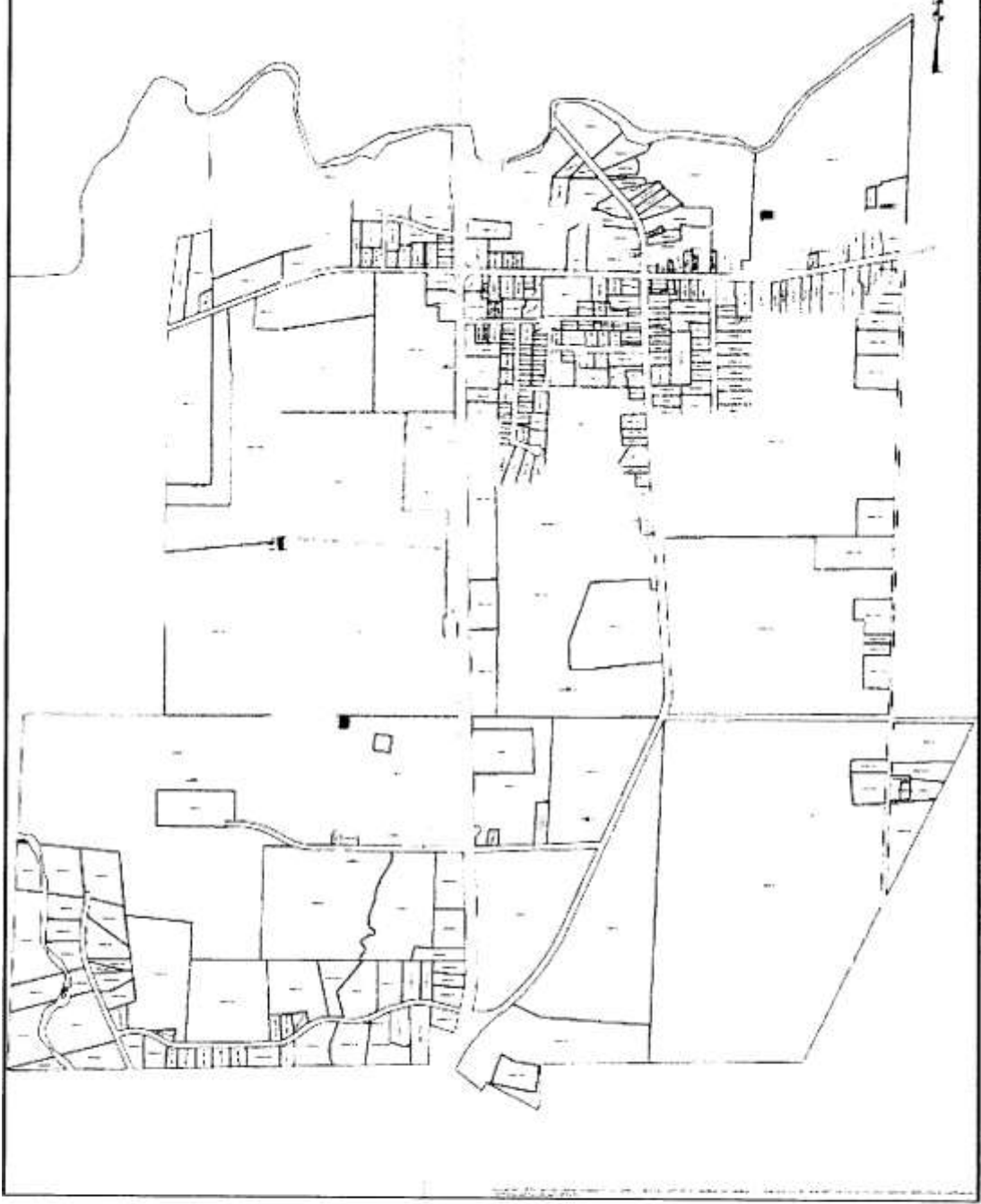
5.009-5-47	3232 Westover Ave	Yorkshire	Cattaraugus
5.009-5-35	3208-3212 Westover Ave	Yorkshire	Cattaraugus
5.009-5-15	3184 Westover Ave	Yorkshire	Cattaraugus
5.009-5-14	3172 Westover Ave	Yorkshire	Cattaraugus
5.009-5-44	3233 Westover Ave	Yorkshire	Cattaraugus
5.009-5-21	3191 Westover Ave	Yorkshire	Cattaraugus
5.009-5-19	3175 Westover Ave	Yorkshire	Cattaraugus
5.009-5-18	3169 Westover Ave	Yorkshire	Cattaraugus
5.009-5-23	3209 Westover Ave	Yorkshire	Cattaraugus
5.009-5-17	3163 Westover Ave	Yorkshire	Cattaraugus
4.004-4-2.1/54	54 Woods Ln	Yorkshire	Cattaraugus
4.004-4-2.1/67	67 Woods Ln	Yorkshire	Cattaraugus

And as further shown on the following map:



**EXHIBIT A-1**

Yorkshire Corners Sewer District Boundary Map



Scale: 1" = 100'



**TOWN OF YORKSHIRE**  
CATTARAUGUS COUNTY, NEW YORK

ADOPTED BY RESOLUTION NO. 100-10  
APRIL 10, 2010

**NOTE: TO THE EXTENT THAT THE MAP AND THIS LIST OF PARCELS CONFLICTS, SAID YORKSHIRE CORNERS SEWER DISTRICT BOUNDARY MAP SHALL BE THE CONTROLLING DOCUMENT FOR PURPOSES OF DETERMINING BOUNDARIES OF THE YORKSHIRE CORNERS SEWER DISTRICT.**

and be it Further Resolved, that this resolution is subject to a 30-day permissive referendum;  
and be it Further Resolved, that the Town Clerk be and she hereby is authorized and directed to file a certified copy of this resolution, in duplicate in the office of the New York State Comptroller;

and be it Further Resolved, that the Town Clerk be and she hereby is authorized and directed to file publish this Resolution for one week in the Arcade Herald and post it at the Yorkshire Town Hall, both of which must occur within ten days of this resolution.

Supervisor Marcia Spencer	VOTING	<input type="text" value="Aye"/>
Councilperson Kenneth Fisher	VOTING	<input type="text" value="Absent"/>
Councilperson Brad Regan	VOTING	<input type="text" value="Aye"/>
Councilperson Teresa Hewitt	VOTING	<input type="text" value="Aye"/>
Councilperson Christopher Edmunds	VOTING	<input type="text" value="Absent"/>

Certified by the Yorkshire Town Clerk this 30<sup>th</sup> day of November, 2020

---

Donna Lavery, Yorkshire Town Clerk

Resolution #94-20 3 – Aye; 0 – Nays; 2 – Absent – Adopted

Supv Spencer opened the public hearing at 7:15pm for the Local Law 1 of 2020, Section 2

**TOWN OF YORKSHIRE  
LOCAL LAW NO. 1 OF THE YEAR 2020**

**Amendment to the Town of Yorkshire, County of Cattaraugus, New York Zoning Law**

BE IT HEREBY ENACTED BY THE TOWN BOARD OF THE TOWN OF YORKSHIRE,  
CATTARAUGUS COUNTY, NEW YORK, AS FOLLOWS:

**SECTION 1. LEGISLATIVE INTENT**

It is the intent of this legislation amend the Town of Yorkshire Zoning Law by requiring  
An 18 inches set back from all property lines for all fences

**SECTION 2. ADDITION OF SECTIONS 5.13.5 TO THE YORKSHIRE ZONING LAW**

Set Back. All fences shall set back 18 inches from all property lines.

**SECTION 3. SEVEABILITY**

The invalidity of any word, section, clause, paragraph, sentence, or provision of this Local Law shall not affect the validity and/or constitutionality of any other part of this Local Law, which shall be given effect.

**SECTION 4. EFFECTIVE DATE**

This Local Law shall become effective November 30, 2020 subject to its filing with the New York Secretary of State.

Resolution #95-20

On a motion of Coun Regan, seconded by Coun Hewitt the following resolution was resolved, that this project will result in no significant adverse impacts in the environment, and therefore an environmental impact statement need not be prepared. This negative declaration impact is issued.

Roll Call was taken by Clerk Lavery

Supv. Spencer – Aye

Coun Fisher – Absent

Coun Edmunds – Absent

Coun Regan – Aye

Coun Hewitt – Aye

3 – Aye; 0 – Nays; 2 – Absent – Adopted

Resolution #96-20

On a motion of Coun Hewitt, Seconded by Coun Regan the following resolution was resolved to enable Local Law 1 of the Year 2020

Supv. Spencer	Voting	Aye
Coun Fisher	Voting	Absent
Coun Edmunds	Voting	Absent
Coun Regan	Voting	Aye
Coun Hewitt	Voting	Aye

3 – Aye; 0 – Nays; 2 – Absent – Adopted

#### Resolution #97-20

On a motion of Coun Regan, seconded by Coun Hewitt the following resolution was resolved, that this project will result in no significant adverse impacts in the environment, and therefore an environmental impact statement need not be prepared. This negative declaration impact is issued.

Roll Call was taken by Clerk Lavery

Supv. Spencer – Aye

Coun Fisher – Absent

Coun Edmunds – Absent

Coun Regan – Aye

Coun Hewitt – Aye

3 – Aye; 0 – Nays; 2 – Absent – Adopted

#### Resolution #98-20

On a motion of Coun Hewitt, seconded by Coun Regan the following resolution was resolve, to award Hydrid Solution the Salt Storage bid at \$259,660.

Roll Call was taken by Clerk Lavery

Supv. Spencer – Aye

Coun Fisher – Absent

Coun Edmunds – Absent

Coun Regan – Aye

Coun Hewitt – Aye

3 – Aye; 0 – Nays; 2 – Absent – Adopted

Derek Rule survey firm needs water lines marked, hourly fee, MDA can assist in marking waterlines

#### Resolution #99-20

On a motion of Coun Hewitt, seconded by Coun Regan the following resolution was resolved to allow MDA to assist in marking waterlines under extra engineering tasks.

Spencer, Aye; Fisher, Absent; Regan, Aye; Edmunds, Absent; Hewitt; Aye

Ayes 3, Nays 0, Absent 2- Adopted

Supv. Spencer entered Executive Session at 7:23pm Regarding Personel  
Asked Highway Supervisor Chris Lexer and Town Clerk Lavery to stay.

Closed Executive Session at 7:33pm

Resolution #100-20

On a motion of Coun Hewitt, Seconded by Coun Regan the following resolution was resolved to accept the Teamsters contract provisions pending attorney review.

Spencer, Aye; Fisher, Absent; Regan, Aye; Edmunds, Absent; Hewitt; Aye  
Ayes 3, Nays 0, Absent 2- Adopted

With no further business to discuss, On a motion of Coun Regan, seconded by Coun Hewitt the meeting was adjourned at 7:37pm

---

Donna M. Lavery, Town Clerk